

DWR PARADEEP

Cyclone bulletin No.23

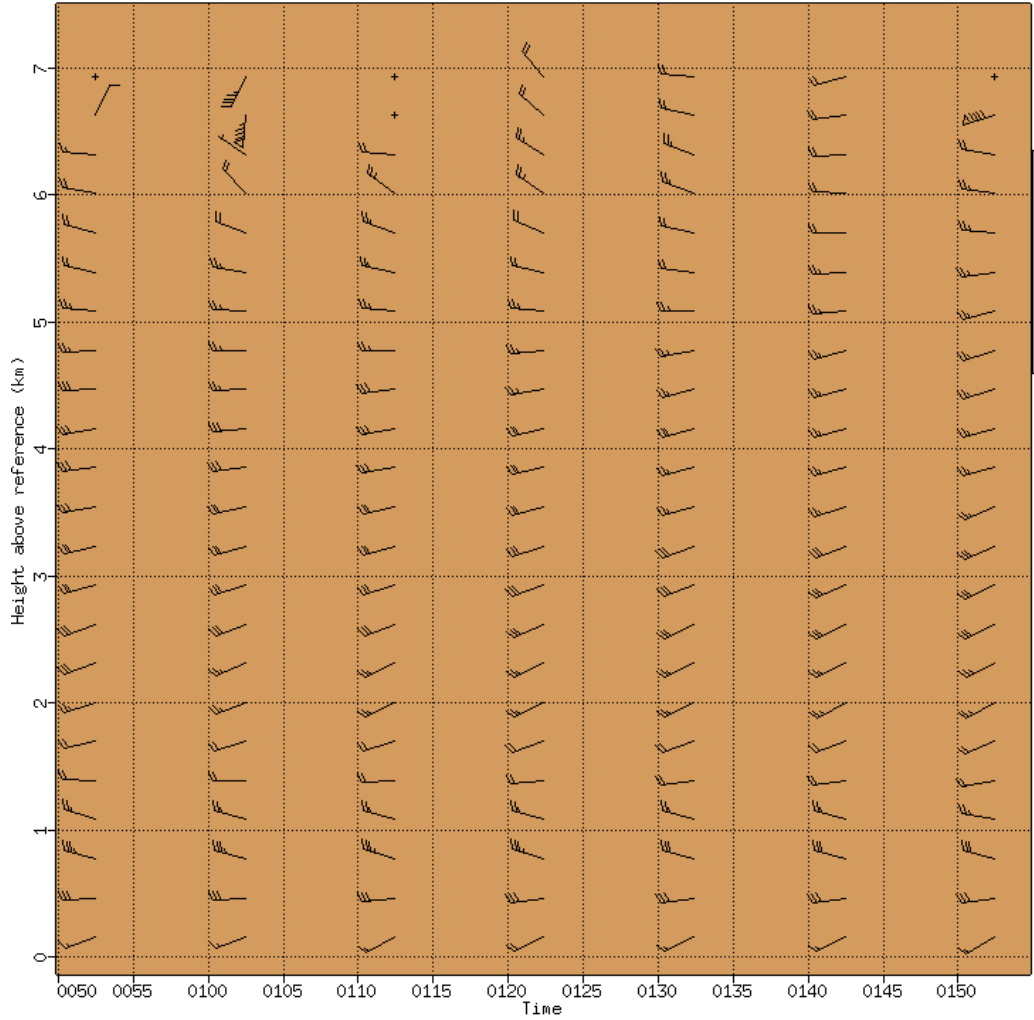
Cyclone : DANA

Time: 25/10/2024 07:30 IST

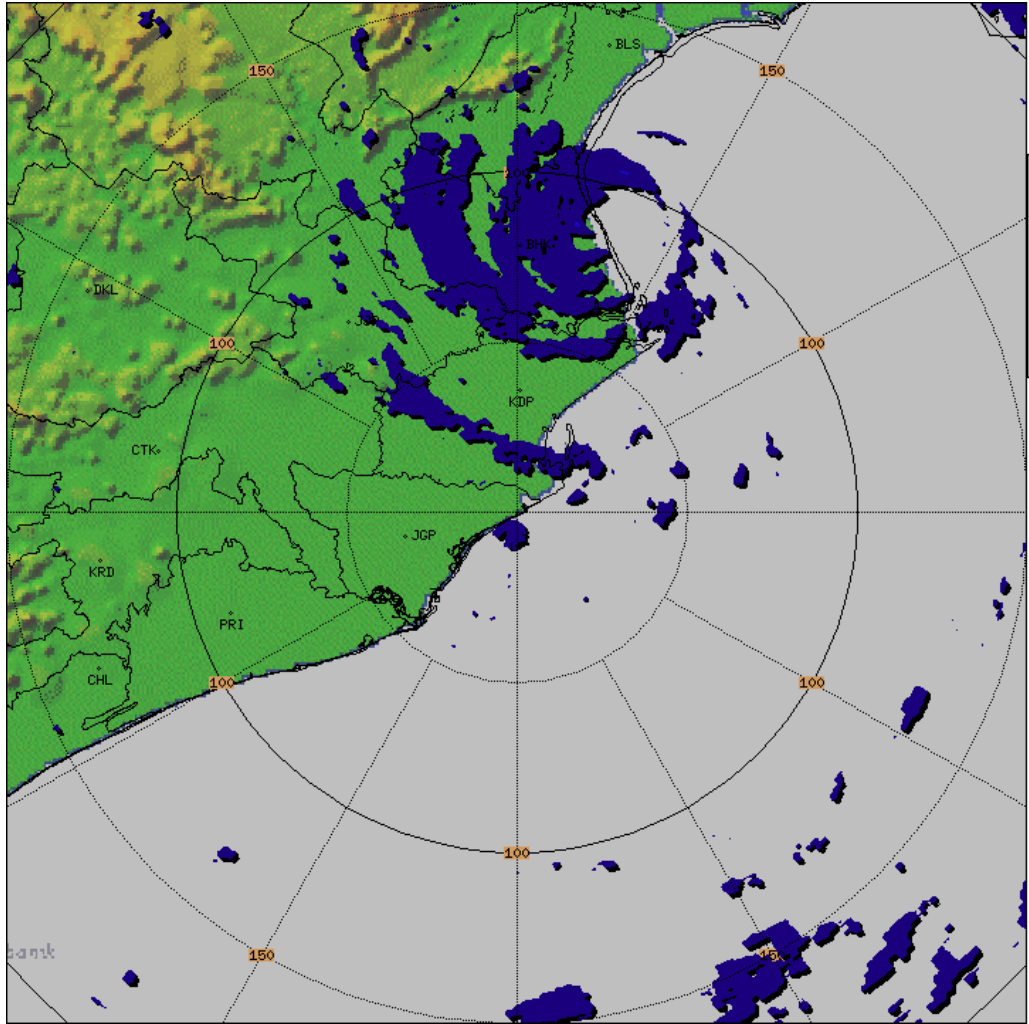
| | | |
|----|--|---------------------------------|
| 1. | Name of the Station | DWR PARADEEP |
| 2. | Date & Time of observation (UTC) | 25/10/2024 0200 UTC |
| 3. | Name of Cyclone | DANA |
| 4. | Information about the Eye of the cyclone | |
| | a)Is the Eye Visible | Visible |
| | b)Shape of the Eye | Nearly Circular |
| | c)Diameter of the Eye (km) | 23km (approx) |
| | d)Estimation of centre of the cyclone based on Eye/Spiral band observation | 21.13N/86.81E/9.5deg/98.4km |
| | e)Echo top (20 dBZ level) of rain bearing clouds around the System within 100 km radius | 10km |
| | f) Maximum radar reflectivity (dBZ) in eye wall and Spiral band region, its height (km) and position (azimuth and distance from the radar) | 47.0dBZ/6.8km/5.6deg/114.2km |
| | g) Maximum reflectivity at any other area (spiral/ streamers etc) | 38.0dBZ/5.7km/348.8deg/68.8km |
| | h) Maximum radial velocity in observed (mps), its height (km) and its position (azimuth and distance from the Radar) | 39.8mps/1.5km/8.4deg/97.8km |
| | i) Maximum velocity in any other area (spiral / streamers / rain shields etc) | -30.36mps/1.4km/358.9deg/96.2km |
| 5. | Tendency of the Cyclone | |
| | a. Intensity(Increasing/Decreasing) | <u>Sustaining</u> |
| | b. Duration for which the information on movement pertains to | One hour |
| | c. Direction of Movement | NNW |
| | d. Estimated speed of Movement | 8 kmph(approx) |
| 6. | Any other Significant Feature | N/A |
| 7. | Confidence | GOOD |

Dhaneesh K (Sc.D)

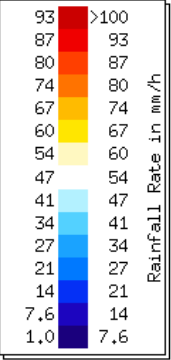
OFFICER-IN-CHARGE
DWR Paradeep

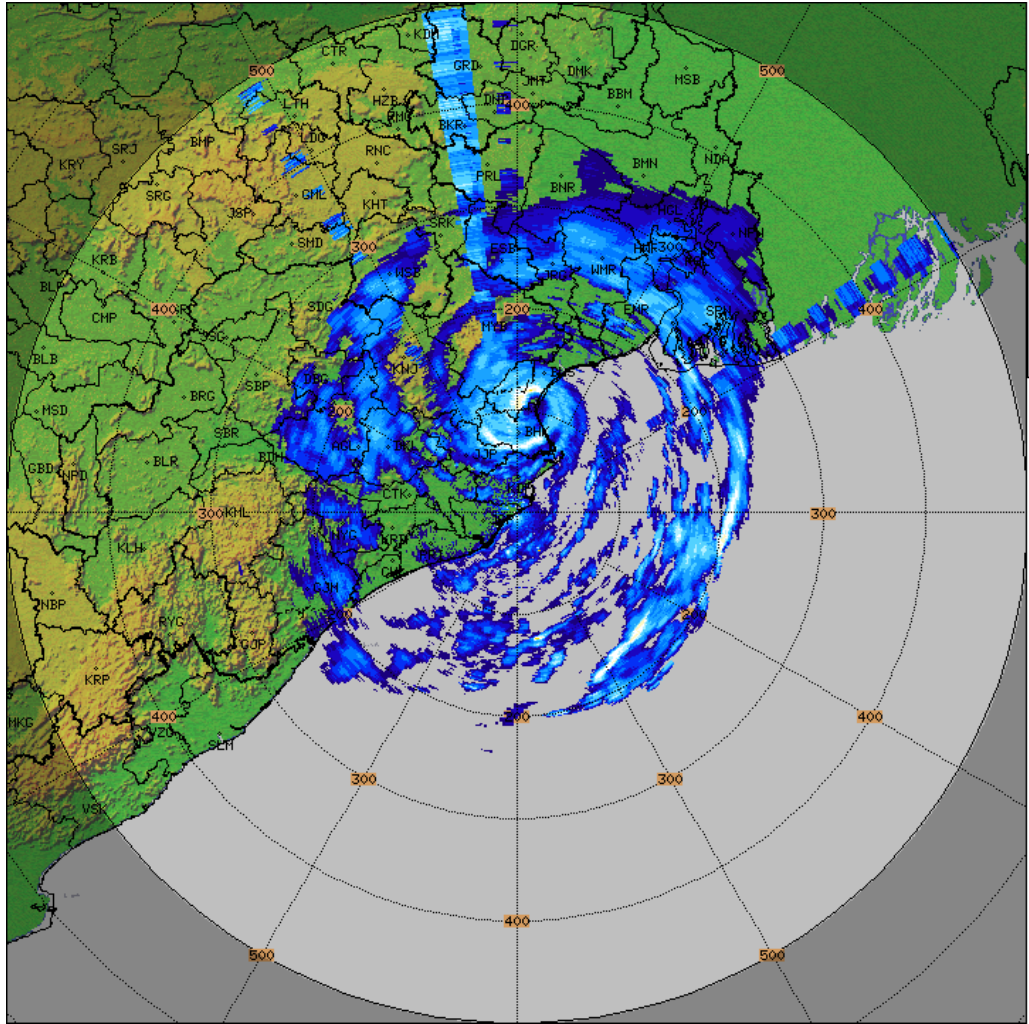


PARADEEP-RADAR
Vol. Vel. Proc.
VVP_30KM
Task: IMD-B
#Intervals:26
Heights:0-8 km
Max Range:30 km
01:52:18Z
25 OCT 2024 UTC

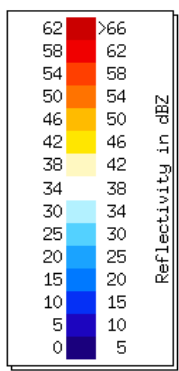


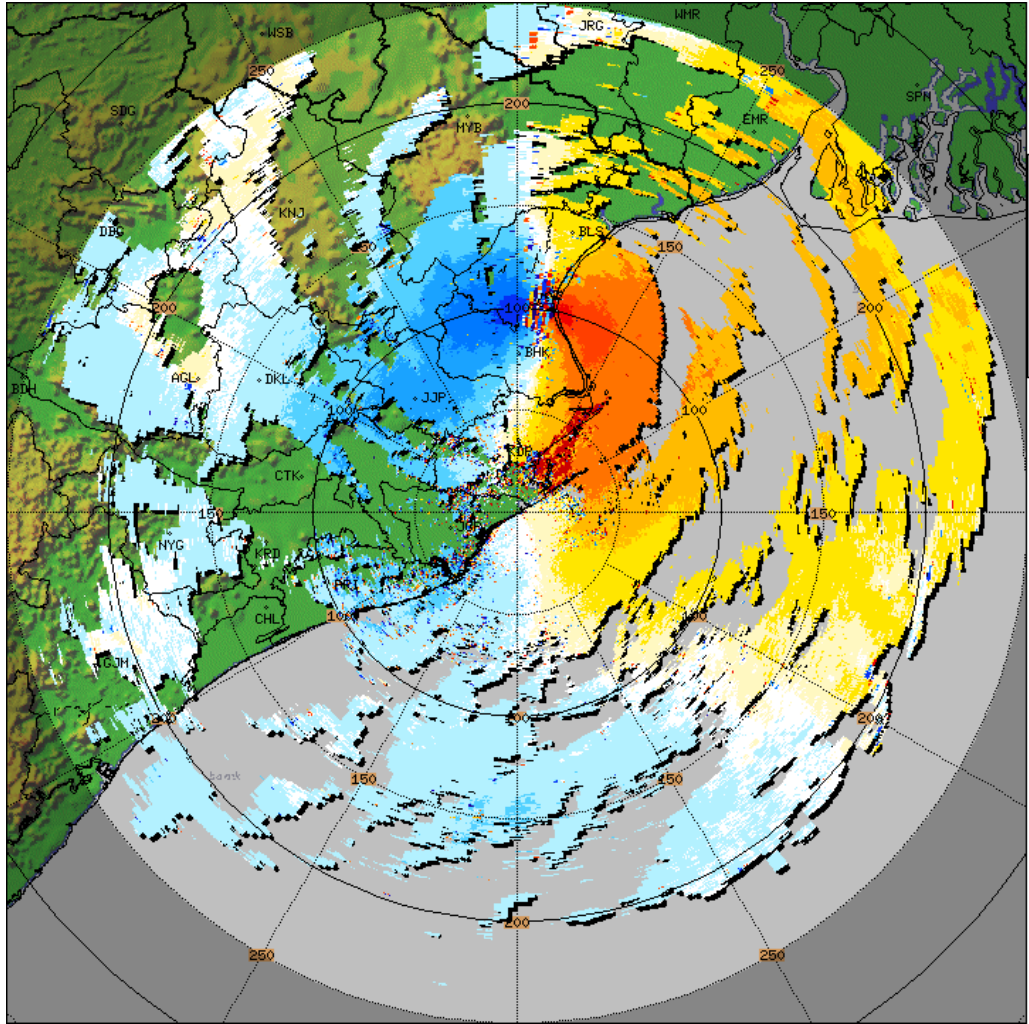
PARADEEP-RADAR
 Surface Rainfall
 SRI_150
 Task: IMD-B
 PRF:600/450
 Melt:Unknown
 Max Range:150 km
23:52:18Z
24 OCT 2024 UTC



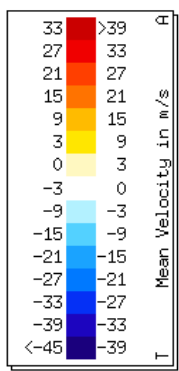


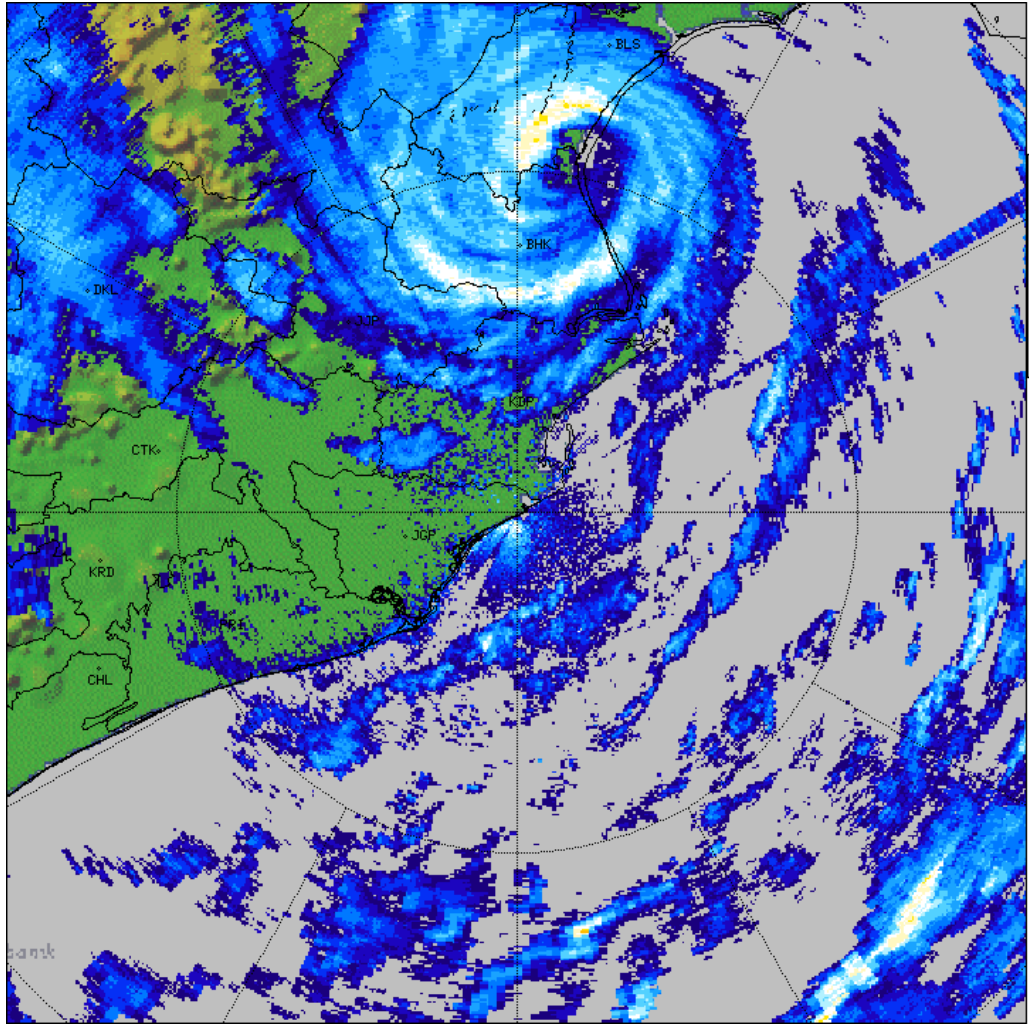
PARADEEP-RADAR
 PPI
 PPI_Z
 Task: IMD-C
 PRF: 250Hz
 Elevation:0.5
 Max Range:500 km
02:00:25Z
25 OCT 2024 UTC



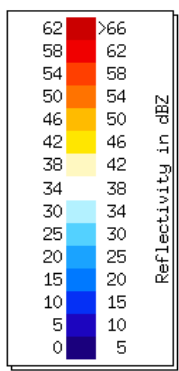


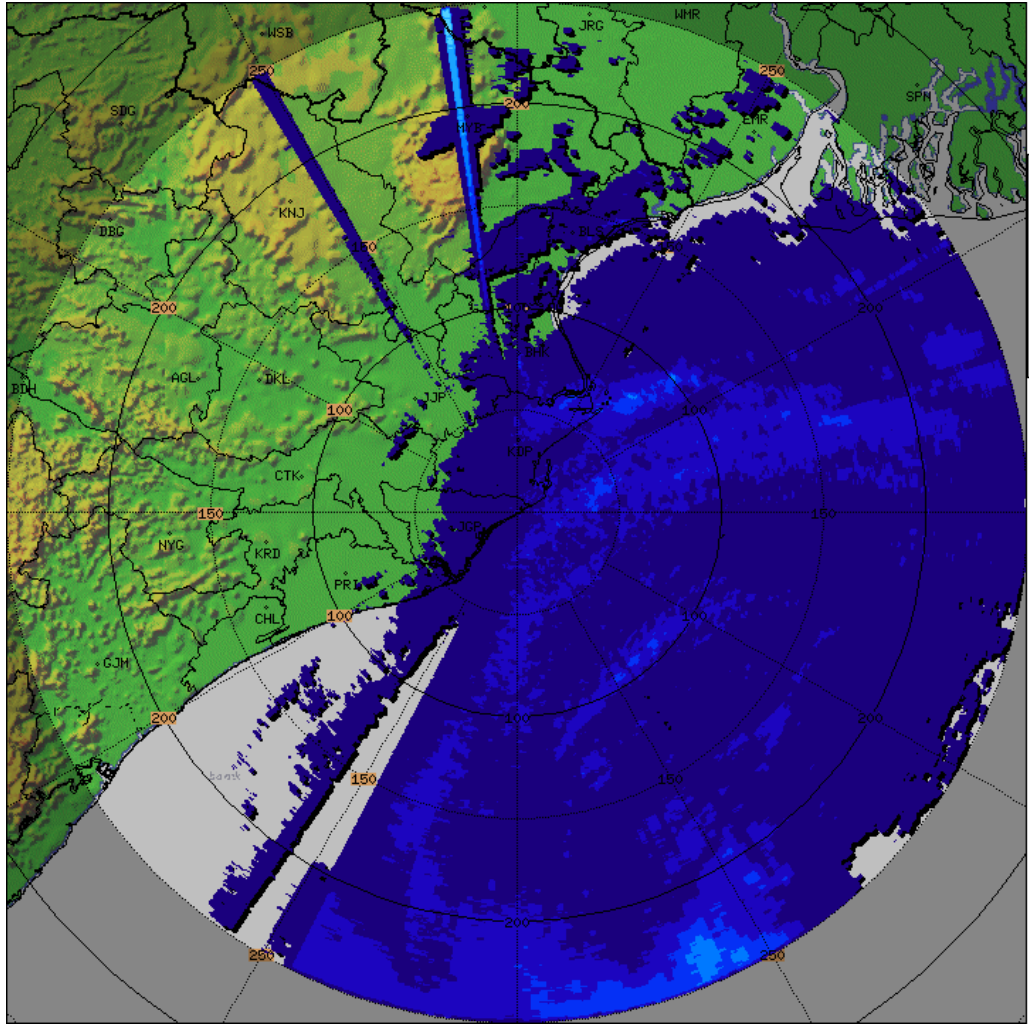
PARADEEP-RADAR
 PPI
 PPI_V
 Task: IMD-B
 PRF:600/450
 Elevation:0.5
 Max Range:250 km
02:02:18Z
25 OCT 2024 UTC





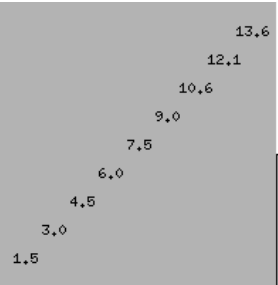
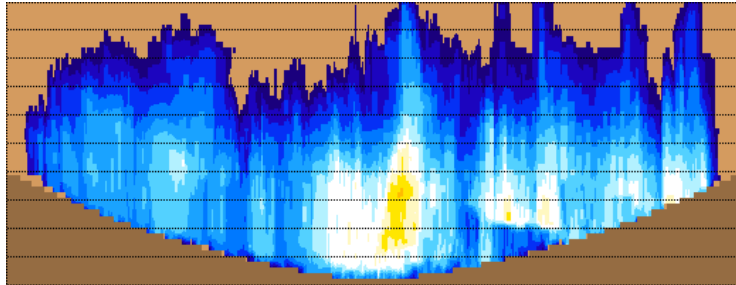
PARADEEP-RADAR
PPI
PPI_150KM
Task: IMD-B
PRF:600/450
Elevation:0.5
Max Range:150 km
02:02:18Z
25 OCT 2024 UTC





PARADEEP-RADAR
 N Hours Rainfall
 HOUR_24
 Task: IMD-B
 PRF:600/450
 Hours:21/24
 Max Range:250 km
03:00:00Z
24 OCT 2024 UTC

| Rain Accum. in mm |
|-------------------|
| 93 |
| 87 |
| 80 |
| 74 |
| 67 |
| 60 |
| 54 |
| 47 |
| 41 |
| 34 |
| 27 |
| 21 |
| 14 |
| 7,6 |
| 1,0 |



PARADEEP-RADAR
 Max with panels
 MAX_Z
 Task: IMD-B
 Min Hgt:0.0 km
 Max Hgt:15.0 km
 Max Range:250 km
02:02:18Z
25 OCT 2024 UTC

